

CONTAINERS

20' DRY / 40' DRY

40' DRY HIGH CUBE

20' OPEN TOP / 40' OPEN TOP

20' FLAT RACK / 40' FLAT RACK

20' REEFER / 40' REEFER



20' DRY / 40' DRY



Dimensions*	20'	40'
Inside length (m)	5,89	12,01
Inside Width (m)	2,33	2,33
Inside Height (m)	2,38	2,38
Door Width (m)	2,33	2,33
Door Height (m)	2,28	2,28
Capacity (m ³)	33,18	67,67
Tare Weight (T)	2	4
Max Cargo (T)	23	25

* These dimensions are given for information only and differ depending on the shipping company

40' DRY HIGH CUBE



Dimensions*	40'
Inside length (m)	12,01
Inside Width (m)	2,33
Inside Height (m)	2,69
Door Width (m)	2,33
Door Height (m)	2,56
Capacity (m ³)	76,28
Tare Weight (T)	4,00
Max Cargo (T)	25,00

* These dimensions are given for information only and differ depending on the shipping company

20' FLAT RACK / 40' FLAT RACK



Dimensions*	20'	40'
Inside length (m)	5,61	12,06
Inside Width (m)	2,2	2,08
Inside Height (m)	2,23	1,95
Door Width (m)	x	x
Door Height (m)	x	x
Capacity (m ³)	x	x
Tare Weight (T)	3	5
Max Cargo (T)	23	25

* These dimensions are given for information only and differ depending on the shipping company

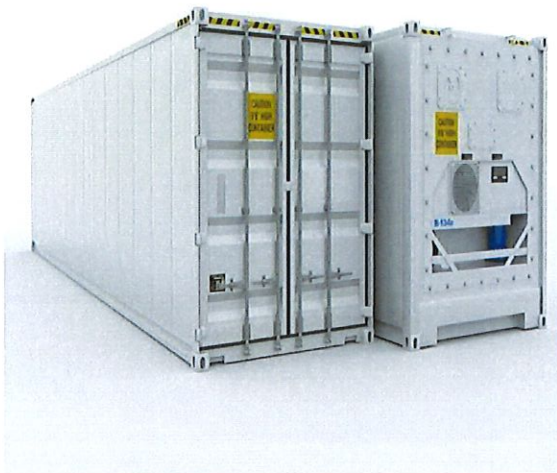
20' OPEN TOP / 40' OPEN TOP



Dimensions*	20'	40'
Inside length (m)	5,89	12,01
Inside Width (m)	2,31	2,33
Inside Height (m)	2,33	2,33
Door Width (m)	2,28	2,33
Door Height (m)	2,18	2,26
Capacity (m ³)	32,16	66,54
Tare Weight (T)	2	4
Max Cargo (T)	23	25

* These dimensions are given for information only and differ depending on the shipping company

20' REEFER / 40' REEFER



Dimensions*	20'	40'
Inside length (m)	5,38	11,48
Inside Width (m)	2,26	2,26
Inside Height (m)	2,26	2,18
Door Width (m)	2,26	2,26
Door Height (m)	2,2	2,13
Capacity (m ³)	28,31	57,76
Tare Weight (T)	3	5
Max Cargo (T)	23	25

* These dimensions are given for information only and differ depending on the shipping company